

Agilent 4395A (Network/Spectrum/Impedance Analyzer) Screen Capture to PC

Signal Processing Lab

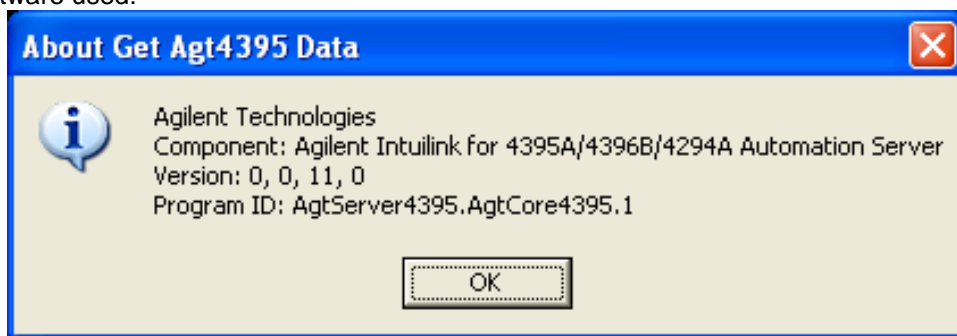
Sean E. Staples | Thursday, February 21, 2008

Hardware Configuration

Verify the 4395A is physically connected to the PC via USB/GPIB interface cable and power on the instrument.

Software Configuration

Software used:

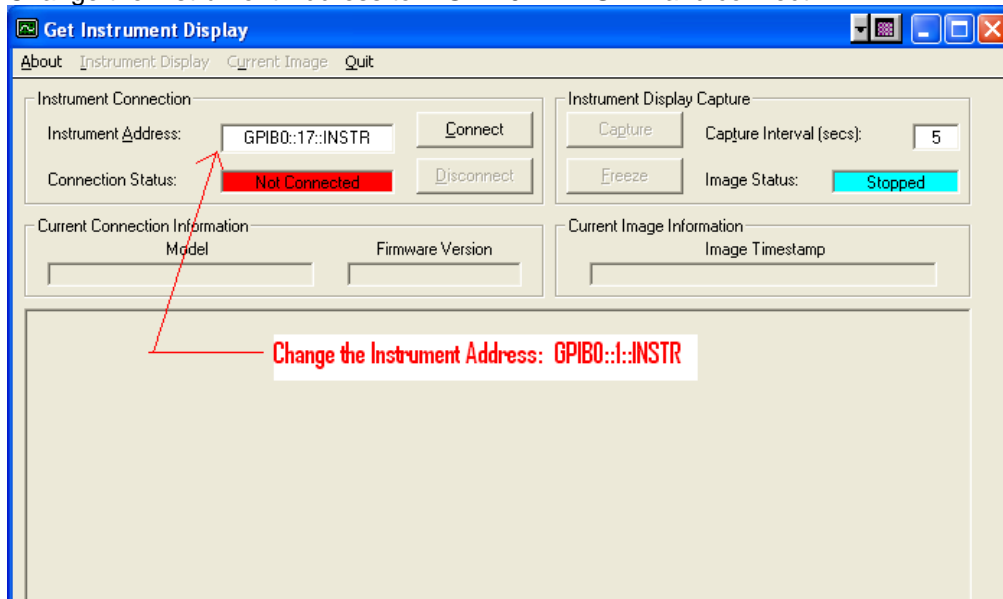


1. Start the Agilent 4395A Screen Capture application located on the pc desktop.

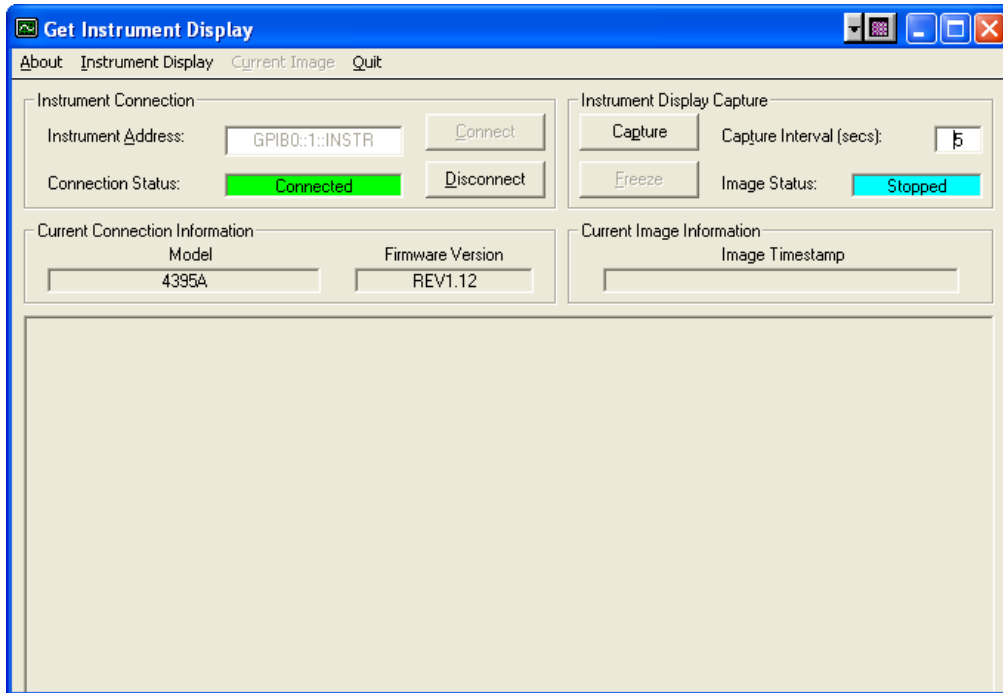


Agilent 4395A Screen Capture.Ink

2. Change the Instrument Address to: "GPIB0::1::INSTR" and connect.



3. Should now have a "green" "Connected" indicator as seen below.



4. Select "Capture" to capture the 4395A screen and copy-paste into application of choice.

