

Installing an ADS Component Library and Placing Library Parts

Purpose

In order to work with the ADS zip package for Lab 3 under ADS 2011, you need install a component library. The double-balanced mixer model needs a diode model, in particular a 1N4148 diode. This component can be found in the library `Analog_Parts_vendor_kit`.

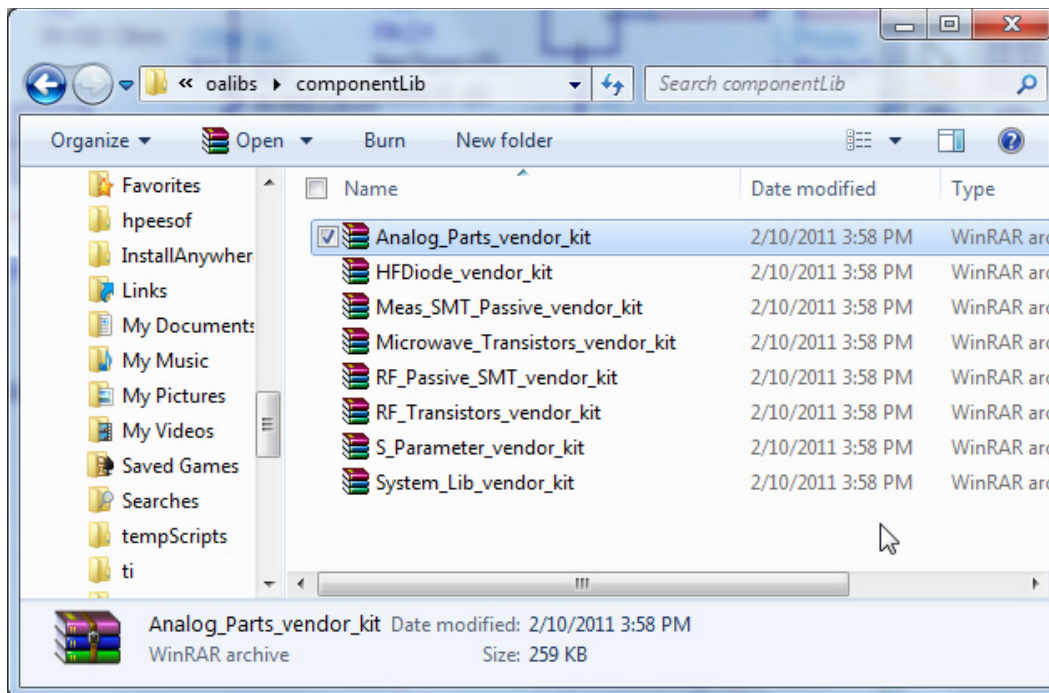
Procedure

Step 1

Verify that you can access the root folder:

```
Agilent\ADS2011_10\oalibs\componentLib\
```

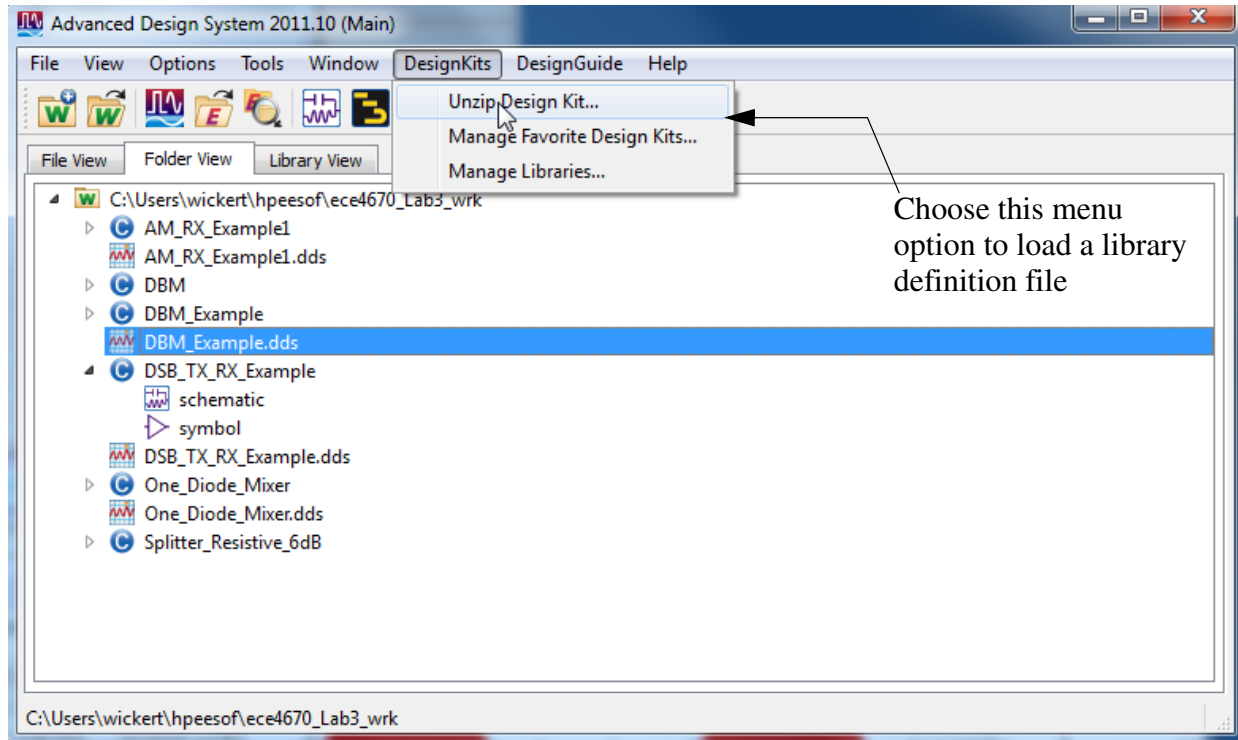
Inside this folder is where you will find zipped versions of component libraries:



Step 2

Unzip the library file of interest, in this case `Analog_Parts_vendor_kit` to your workspace working folder, perhaps/typically `$Home/hpeesof/`. You get access to the unzipping capability via the

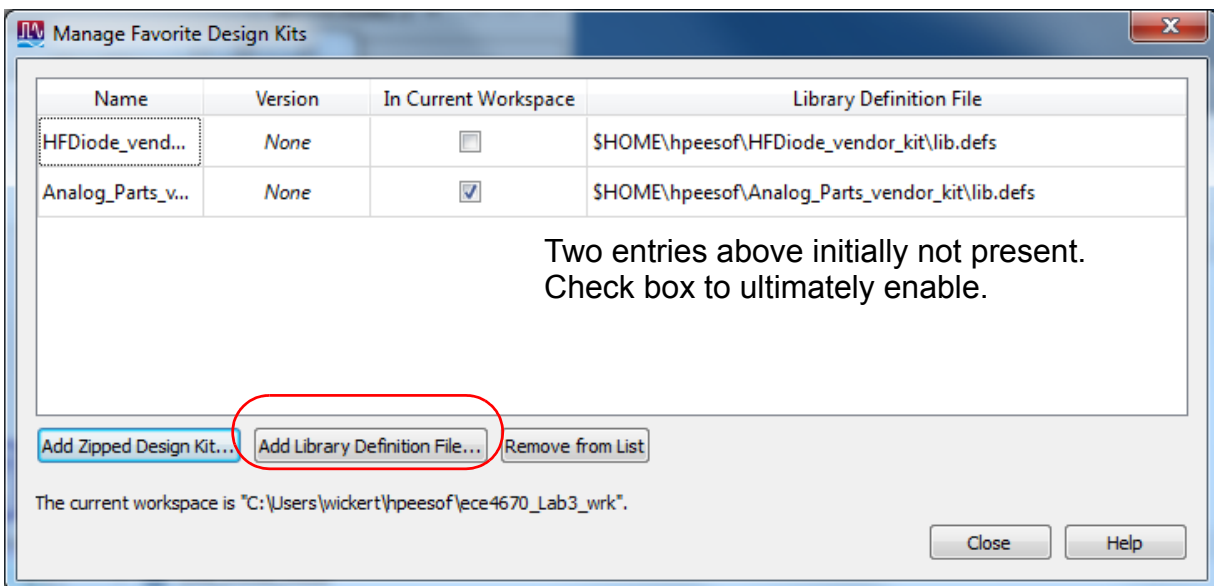
ADS main windows as shown below:



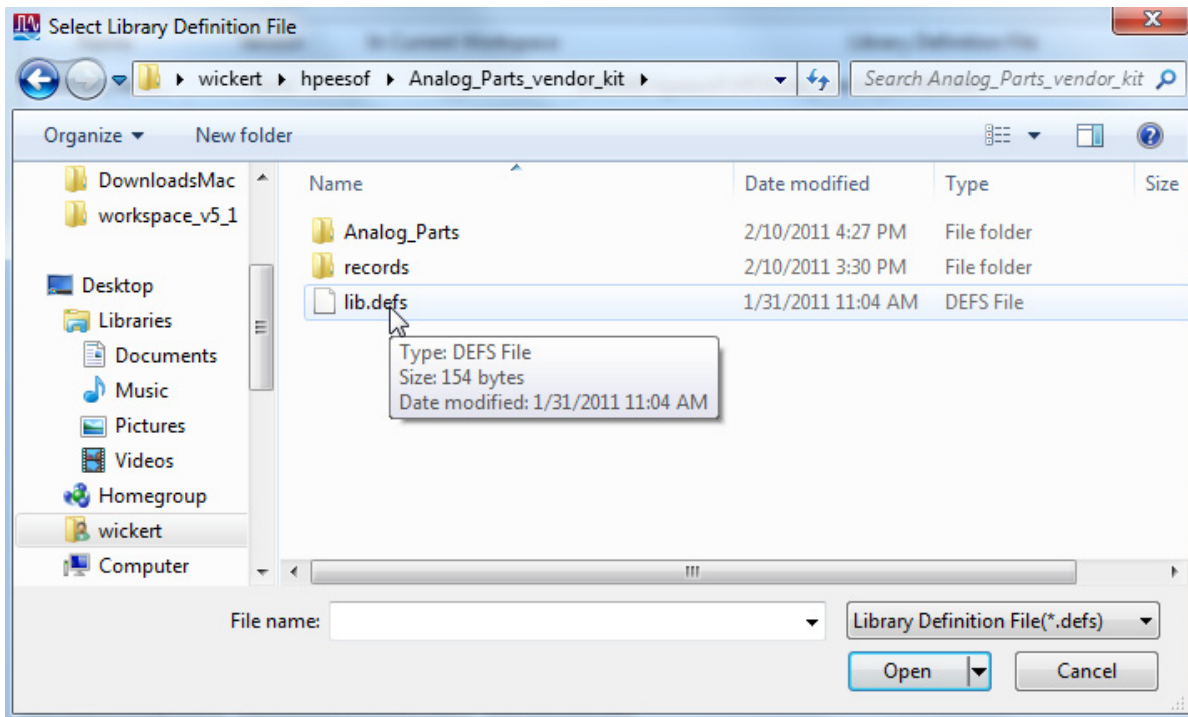
You then select the design kit you want to unzip and have it placed in your `hpeesof` folder.

Step 3

Add the library definition file to your current workspace by selecting **Manage Favorite Design Kits...** as shown in the above screen shot. You will then see a dialog which includes the option to load a library definition file



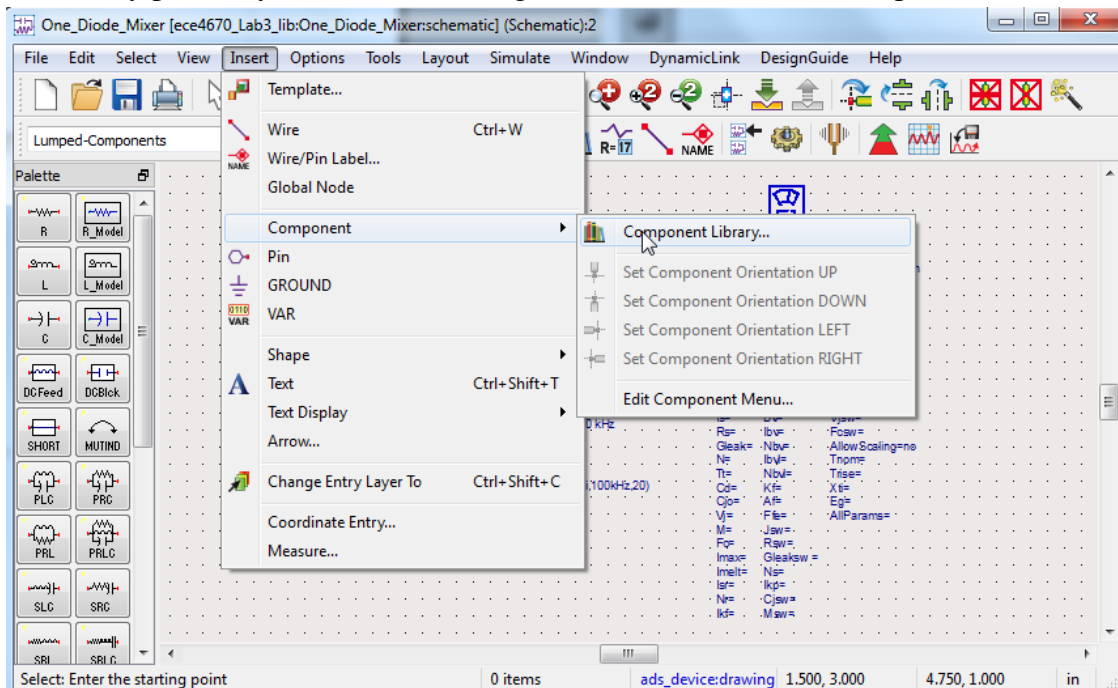
Drill into the folder that contains the now unzipped Parts Kit and click on the lib.def file



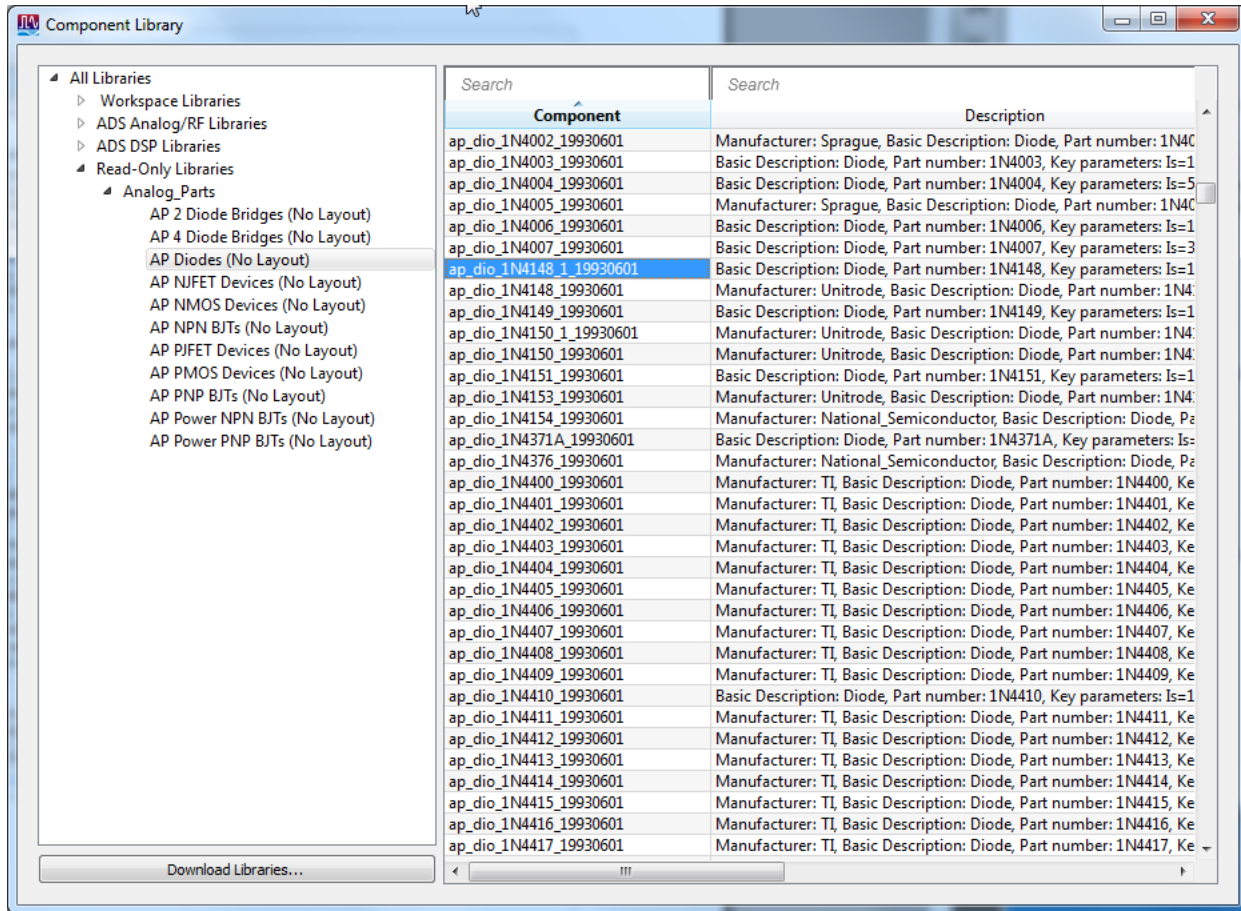
By clicking Open the library is now loaded into the workspace, and also will be available to new Workspaces.

Placing Library Parts

To place library parts, say a 1N4148 diode, go to the Insert menu on an open schematic file:



Choose Component Library



Click and drag the selected part to the schematic.